

LANDMARK  
PROPERTIES<sup>LLC</sup>

FOR  
SALE



## 25 ACRES +/- in New Braunfels

Comal County, Texas



Rebecca Creek Rd.  
New Braunfels, TX 78133



\$595,000  
(\$23,800/ac)



25 Acres +/-

Satellite

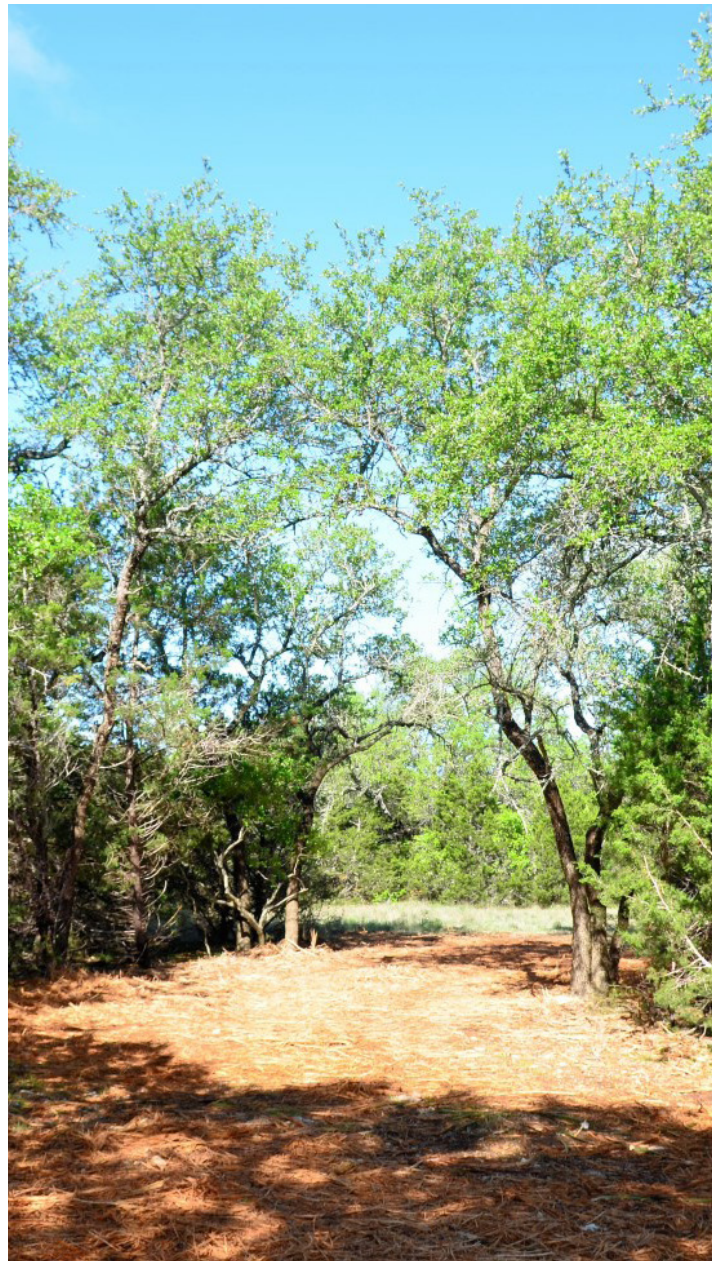


Proximity



## Property Information

- Stunning Hill Country acreage
- Prime location in Comal County
- Only minutes to downtown New Braunfels, Canyon Lake & Bulverde
- Less than 7 miles to Hwy 281
- Less than 2 miles to Smithson Valley Middle School
- Build your dream home among the beautiful oak



---

# LANDMARK

PROPERTIES <sup>LLC</sup>

---

Landmark Properties, LLC has been providing professional real estate brokerage services in the land, ranch and commercial markets for over 20 years. Whether you are buying or selling, they understand the process can often be challenging and complicated, so Landmark Properties, LLC focuses on taking the pressure off of you so you can make clear and concise decisions throughout the process. Their in-depth market knowledge, and networking with other brokers, surveyors, and appraisers are some of the reasons for the continued success of Landmark Properties, LLC.

Honesty, integrity, character, professionalism and thoroughness representing your interests are paramount to a “successful sale” which is their primary goal.

[LANDMARKSALES.COM](http://LANDMARKSALES.COM)

## Landmark Properties, LLC

492 W San Antonio St.  
New Braunfels, TX 78130

830.627.9803

## JEFF WILFORD

TX REAL ESTATE BROKER LIC #443116

[jeff@landmarksales.com](mailto:jeff@landmarksales.com)

210.287.4669

## DARREN BUECHE

TX REAL ESTATE LIC #611266

[darren@landmarksales.com](mailto:darren@landmarksales.com)

830.237.9648

Information herein is deemed reliable but is not guaranteed or warranted by Broker and may be subject to change or withdrawal without prior notice. The Seller(s), and/or one or more partners/officers of the Seller may hold Texas real estate licenses.

Copyright © 2019 Landmark Properties, LLC. All Rights Reserved.