

LANDMARK
PROPERTIES^{LLC}

FOR
SALE



25 ACRES +/- in Spring Branch

Comal County, Texas



6186 FM 311
Spring Branch, TX 78070



\$595,000
(\$23,800/ac)



25 Acres +/-

Satellite

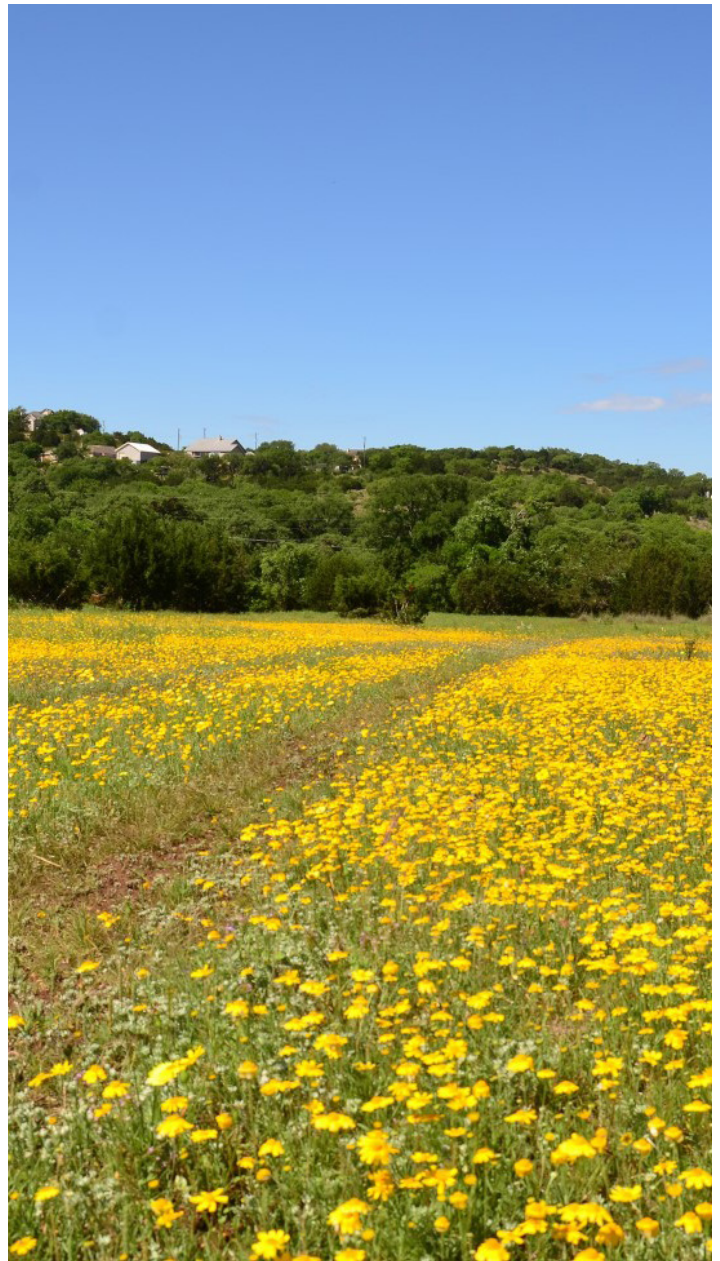


Proximity



Property Information

- Hill Country land at it's best!
- Rare, top choice location on FM 311
- Only minutes to downtown New Braunfels, Canyon Lake & Bulverde
- Approx. 7miles to Hwy 281
- Less than a mile to Smithson Valley Middle School
- Many fantastic building sites nestled among the oaks



LANDMARK

PROPERTIES ^{LLC}

Landmark Properties, LLC has been providing professional real estate brokerage services in the land, ranch and commercial markets for over 20 years. Whether you are buying or selling, they understand the process can often be challenging and complicated, so Landmark Properties, LLC focuses on taking the pressure off of you so you can make clear and concise decisions throughout the process. Their in-depth market knowledge, and networking with other brokers, surveyors, and appraisers are some of the reasons for the continued success of Landmark Properties, LLC.

Honesty, integrity, character, professionalism and thoroughness representing your interests are paramount to a “successful sale” which is their primary goal.

LANDMARKSALES.COM

Landmark Properties, LLC

492 W San Antonio St.
New Braunfels, TX 78130

830.627.9803

JEFF WILFORD

TX REAL ESTATE BROKER LIC #443116

jeff@landmarksales.com

210.287.4669

DARREN BUECHE

TX REAL ESTATE LIC #611266

darren@landmarksales.com

830.237.9648

Information herein is deemed reliable but is not guaranteed or warranted by Broker and may be subject to change or withdrawal without prior notice. The Seller(s), and/or one or more partners/officers of the Seller may hold Texas real estate licenses.

Copyright © 2019 Landmark Properties, LLC. All Rights Reserved.