

**FOR
SALE**



434 ACRES on FM 462

Medina County, Texas



8845 FM 462
Hondo, TX 78861



\$2,125,000

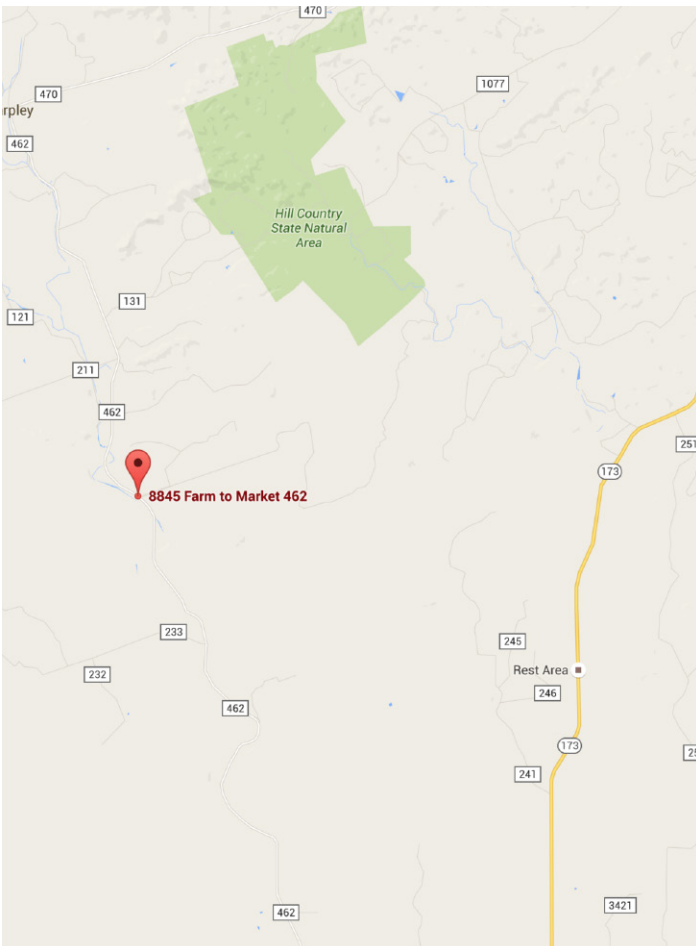


434 acres

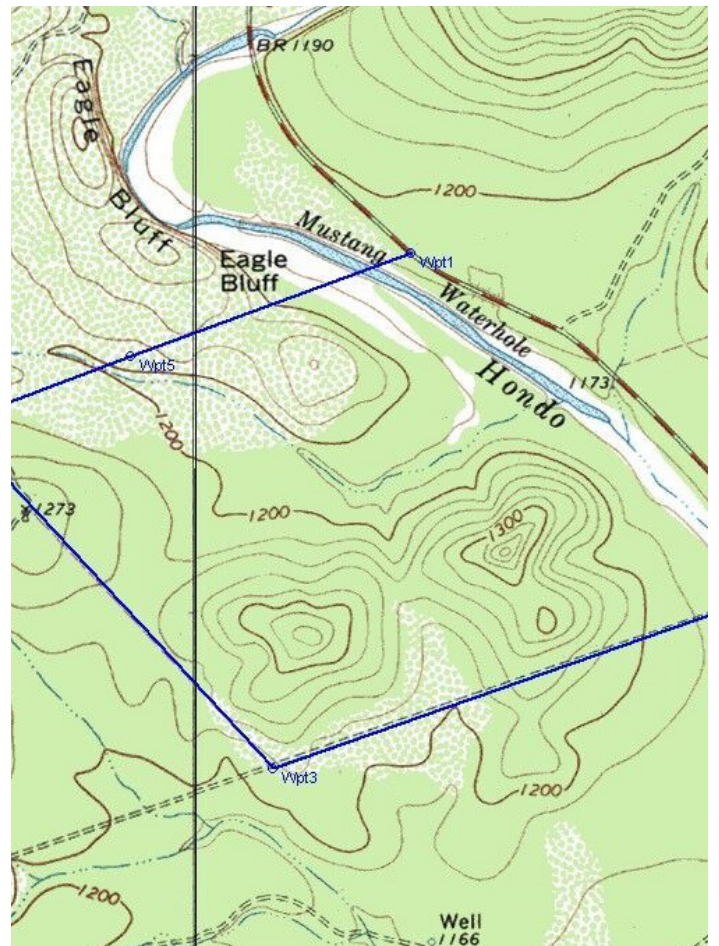
Satellite



Street



Topo

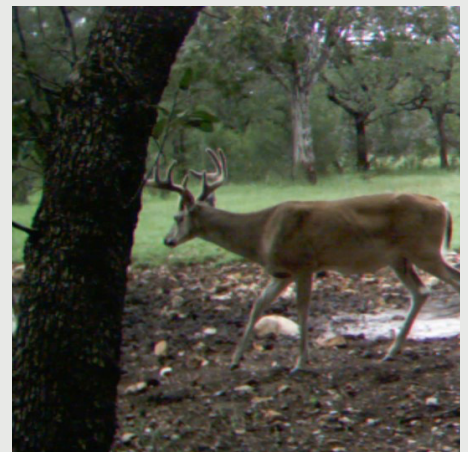
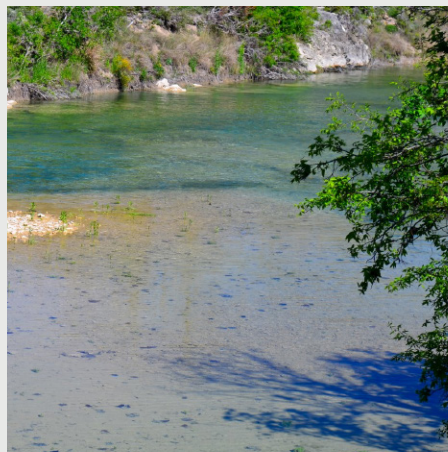
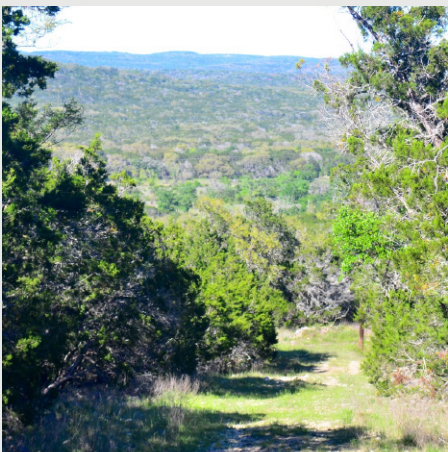


Property Information

- Great water, with approximately 4,500 feet of frontage on Hondo Creek
- Abundant wildlife including white tail deer, hogs, turkey, and aoudad
- Nice 3 bed/3 bath house, barn, strong 1,295 feet deep water well
- Beautiful hill country views
- All mineral rights, believed to be 100%
- Approximately 4,500 feet frontage on FM 462, 15 miles north of Hondo



Additional Images



LANDMARK

PROPERTIES ^{LLC}

Landmark Properties, LLC has been providing professional real estate brokerage services in the land, ranch and commercial markets for over 20 years. Whether you are buying or selling, they understand the process can often be challenging and complicated, so Landmark Properties, LLC focuses on taking the pressure off of you so you can make clear and concise decisions throughout the process. Their in-depth market knowledge, and networking with other brokers, surveyors, and appraisers are some of the reasons for the continued success of Landmark Properties, LLC.

Honesty, integrity, character, professionalism and thoroughness representing your interests are paramount to a “successful sale” which is their primary goal.

LANDMARKSALES.COM

Landmark Properties, LLC

492 W San Antonio St.
New Braunfels, TX 78130

830.627.9803

JEFF WILFORD

TX REAL ESTATE BROKER LIC #443116

jeff@landmarksales.com
210.287.4669

DARREN BUECHE

TX REAL ESTATE LIC #611266

darren@landmarksales.com
830.237.9648

Information herein is deemed reliable but is not guaranteed or warranted by Broker and may be subject to change or withdrawal without prior notice. The Seller(s), and/or one or more partners/officers of the Seller may hold Texas real estate licenses.

Copyright © 2016 Landmark Properties, LLC. All Rights Reserved.